

*Loving*

DECEMBER 2020 • Issue 9

# HOME

Brought to you by Graham & Brown

## WARMEST WISHES

This year may be different but that won't stop us bringing warmth and luxury into your home.

*In the Spotlight*

## GLASS HEART

Crisp, clean and contemporary, explore how you can use our spotlight colour of the month.

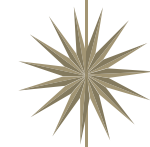
## 'TIS THE SEASON TO BE CREATIVE

Using Wallpaper and Colour of the Year, a staircase and drinks cabinet have been transformed and given a whole new look!





CLICK THE PRODUCT IMAGES TO SHOP



*“This year our home has become the most important space for all of us”*

Without doubt 2020 has been a challenging year, none of us expected to be tested in the way that we have been. We’ve faced huge amounts of change and have had to adapt personally and in business. Here at Graham & Brown our priority has been to protect the health and well being of all our colleagues as well as to help the young people in our community via support of our local youth charity Blackburn Youth Zone. They have sent out over 10,000 food parcels to the most vulnerable young people in our community, as well as offering digital youth services, mentoring and well being support to many young people in our community.

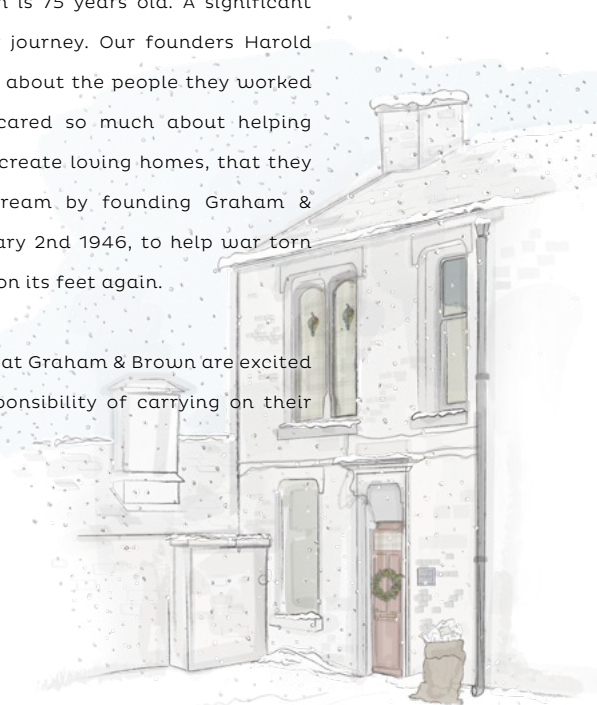
One of the young leaders at BYZ, Trent, has written a poem about this year entitled - “My 2020”, which he has shared with all the business patrons in our community that support the charity - “Some may say 2020 is cancelled, I say it made me excel, Some may say 2020 is painful, I say look for the beautiful”. Clear advice that even in a year of huge uncertainty and challenge, there are things to be proud of.

This year our home has become the most important space for all of us, its where we

connect with loved ones, virtually or in person. Where we work, exercise, eat, and relax to stay healthy in body and mind to fight the challenges of 2020. If in some small way this year our team have helped you create a loving home, a safe and stimulating space that has helped you find the beautiful in this year then we have achieved our goal, of putting the customer at the heart of our business.

I hope you have a loving, restful and fun Christmas within your small bubble of family and friends, and like Trent have time to reflect on some of the positives of 2020. Next year, Graham & Brown is 75 years old. A significant milestone in our journey. Our founders Harold and Henry cared about the people they worked with and they cared so much about helping their customers create loving homes, that they enacted their dream by founding Graham & Brown on February 2nd 1946, to help war torn Britain get back on its feet again.

All of us working at Graham & Brown are excited to have the responsibility of carrying on their legacy in 2021.



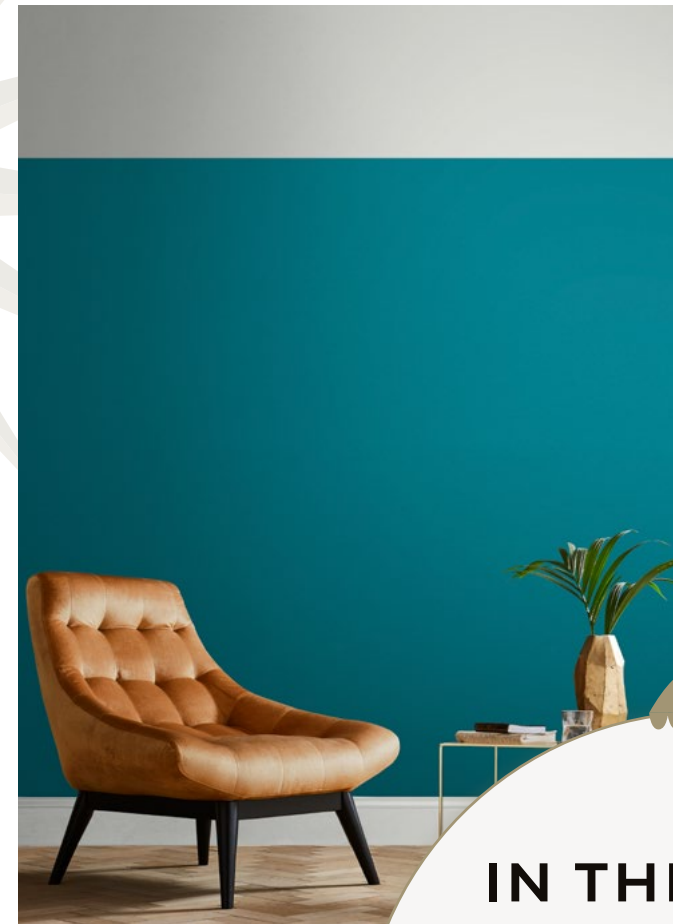
The Original Office, Haygarth Street, Blackburn



# *In this* ISSUE

CHRISTMAS ADDRESS	3
IN THE PRESS	5
CELEBRATE CHRISTMAS IN STYLE	6
<i>Shop the look</i>	8
IN THE SPOTLIGHT	12
'TIS THE SEASON TO BE CREATIVE	14
TRENDING COLOURS	16
SONGS TO DECORATE TO	20
NETFLIX & DECORATE?	21
LOVING YOUR HOMES	22
CLAY & ROCK	24

*In The Press*



as seen in **STYLE AT HOME**



as seen on the cover of **CARDIFF LIFE**

## IN THE PRESS

*Read all about...us!*

Look Mum! I'm a cover girl! We like nothing more than leafing through interior press magazines and being inspired by their schemes and gorgeous imagery! This month our beautiful imagery has been used not only inside but on the covers to inspire you this festive season!



**JENNA**  
as seen in **REAL HOMES**



as seen in **HOMES&INTERIORS SCOTLAND**



as seen in **IDEAL HOME**



## *Celebrate Christmas in* **STYLE**

Who doesn't love decorating their house ready for Christmas? We certainly do! As much as we enjoy a glistening Christmas tree, shining baubles and crisp garlands, your Christmas décor doesn't need to just sit within the decorations.

Gold is a perfect all-year-round metallic. Not only can it add a shimmer to the summer months, but it really thrives during the festive season. Palm Fan Charcoal details a large-scale gold palm leaf on top of a moody backdrop. Pair this with shimmering metallic accessories and tableware and your home will be transformed into a wonderland! You can also bring metallic detailing into your home using a variation of patterns. Art Deco Midnight (pictured left) is a wallpaper inspired by the roaring 1920's featuring a silver art-deco motif. This design is timeless yet so versatile.



ART DECO MIDNIGHT partnered with NOTTE





PALM FAN CHARCOAL partnered with BLACK CAB, GOLD METALLIC & LONDON BRIDGE

## SHOP THE LOOK



### CANDLESTICK

*Natlight holder*

[nordicnest.com](https://nordicnest.com)



### PAPER

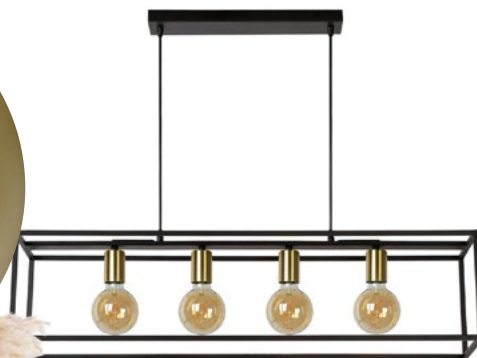
*Palm Fan Charcoal*

[grahambrown.com](https://grahambrown.com)



### GOLD METALLIC

[grahambrown.com](https://grahambrown.com)



### LIGHT

*Ruben Kitchen Island Pendant*

[wayfair.com](https://wayfair.com)



### PAMPAS GRASS

[notonthehighstreet.com](https://notonthehighstreet.com)



### RUG

*Grey Faux Sheepskin*

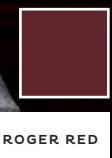
[beliani.co.uk](https://beliani.co.uk)





*Oh the weather outside is frightful, but  
your décor is so delightful!*

We can all agree that red is a classic Christmas colour, which is why Roger Red has stolen our hearts. This rich and regal red can be used with warm neutrals for a comforting interior, however when paired with deep blues, it will create an opulent, indulgent feel.



ROGER RED

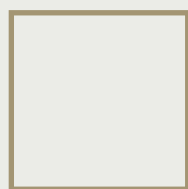


G L A

S S H

E A R

T



GLASS HEART

## Colour Spotlight



**PAPER** *Trelliage Bead Pearl*  
grahambrown.com



**CUSHION**  
*Dusky Pink Lavish*  
grahambrown.com

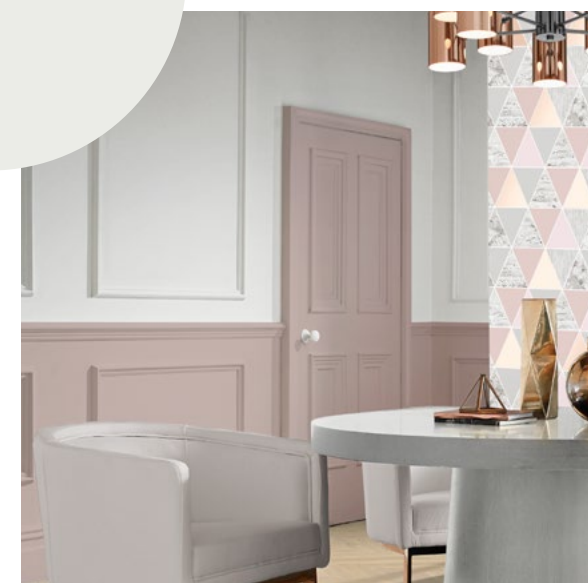
**PAINT**  
*Munchkin's Nose*  
grahambrown.com



**GLASS HEART**  
grahambrown.com



**CUSHIONS** *Silver Shimmer Metallic, Silver Radiance Large*  
grahambrown.com



*Crisp, clean and contemporary*, Glass Heart is the perfect tone of off white to create a stunning backdrop to any décor.

It's a firm favourite which partners many of our wallpapers and murals. Pair with pearl and gold wallpapers to create a sophisticated look, or use this tone to highlight colours such as dusky pinks and muted colours.



**PAPER** *Art Deco Rose*  
grahambrown.com



# 'TIS THE SEASON TO BE CREATIVE

## UPCYCLING WITH WALLPAPER & COLOUR OF THE YEAR 2021

It's no secret, we absolutely LOVE an upcycling project at Graham & Brown.

Whether it's an old piece of furniture like a chest of drawers or a chair that needs a little more character, we're firm believers that anything can be transformed.

We were absolutely blown away when we saw these two make-overs by Andrea Groot and 84 Square using our Wallpaper and Colour of the Year 2021, Timepiece Amethyst and Epoch. Timepiece Amethyst represents Graham & Brown on our Diamond 75th anniversary, boasting sharp geometrics and dainty florals.

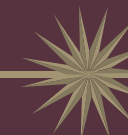
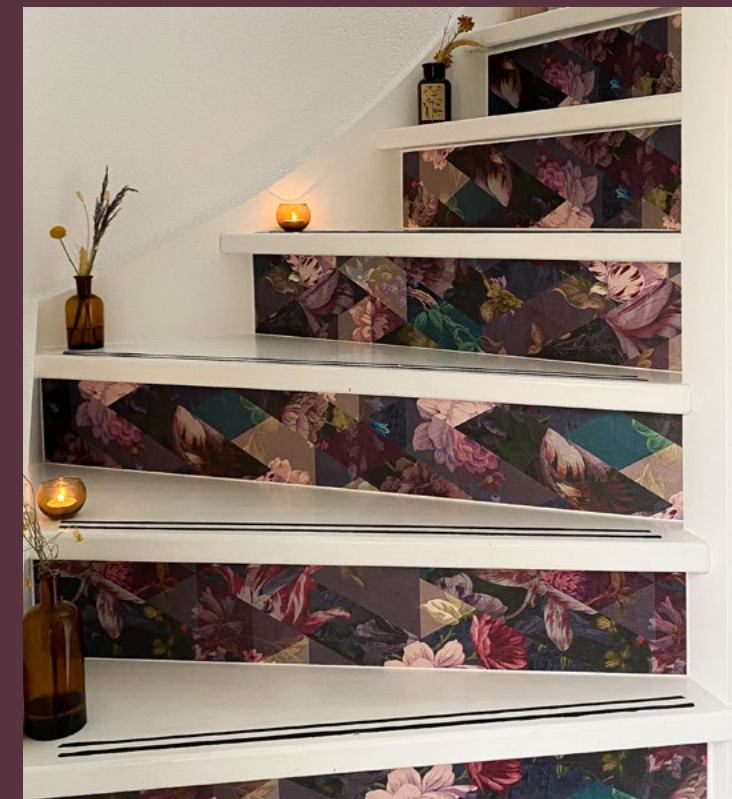


The perfect accompaniment, Epoch, is a proud and regal purple shade which oozes style and sophistication.

‘THE COLOURS,  
THE FLOWERS,  
THE GRAPHICS,  
*I loved it!*’

Andrea Groot really stepped it up and took it to the next level with the upcycling of her stairs!

@andrea\_groot



*Before*

84 Square turned their drinks cabinet into a luxurious WOTY & COTY haven!

@84\_square





# TRENDING COLOURS *for your Christmas Makeover*

---

WE'RE LOVING JEWEL TONES AT THE MOMENT. THESE RICH AND REGAL HUES BRING AN ATMOSPHERE OF LUXURY AND OPULENCE, AS WELL AS SITTING IN THE FOREFRONT OF TRENDS GOING INTO 2021.

Our Colour of the Year 2021, Epoch, is the perfect place to start. Epoch is a deep, warm berry hue packed with character.

As a statement shade, Epoch can sit alongside a huge array of other colours to create your jewel-toned retreat. A gorgeous partner for Epoch is Tiru, which was our Colour of the Year 2019! This avant-garde hue will add a little peacock inspired beauty to your décor!

Another great jewel tone to make your home pop is Glasshouse. Holding blue undertones, Glasshouse goes hand-in-hand with the "bringing the outside in" trend and, let's face it, looks great all year round as well as at Christmas!



If you don't feel like bringing the drama, jewel tones can rest nicely next to warm neutral tones. Taupe Twist is a simple yet proud neutral which can be styled effortlessly. Alternatively, Accrington Road is a versatile sage green that is classic and chic.

All of our paint colours are available in our Resistance finish. Our Resistance paint is a highly durable, extra matt emulsion that remains ultra-low sheen even after cleaning. The moisture repellent formula is designed to keep interior walls and ceilings looking beautiful for longer!

*Why choose* **RESISTANCE?**

**SUPER MATT.**

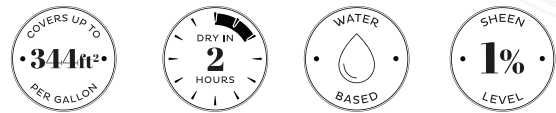
**WATER-BASED.**

**ULTRA DURABLE.**

Resistance Ultra Durable Matt Emulsion has a luxurious, extra matt finish that you can wipe clean with confidence, making it ideal for use in hallways, kitchens, bathrooms and children's rooms. All this and it's water-based.



*No compromise.*





SONGS TO DECORATE TO

December Playlist

<i>White Christmas</i>	BING CROSBY
<i>Total Eclipse of the Heart</i>	BONNIE TYLER
<i>Let it Snow! Let it Snow! Let it Snow!</i>	DEAN MARTIN
<i>Don't Go Breaking my Heart</i>	ELTON JOHN
<i>Winter Wonderland</i>	DEAN MARTIN
<i>Heart of Glass</i>	BLONDIE
<i>Last Christmas</i>	WHAM!
<i>Heartbeat</i>	SCOUTING FOR GIRLS
<i>All I Want For Christmas Is You</i>	MARIAH CAREY
<i>Tell It To My Heart</i>	TAYLOR DAYNE



SEARCH **GRAHAM&BROWN** ON SPOTIFY OR TAP THE CAMERA ICON  
IN THE SEARCH BOX AND SCAN THE CODE ABOVE



NETFLIX &  
*DECORATE ?*

Since its arrival on Netflix recently, *The Queen's Gambit* has captivated over 62 million viewers. If you've seen it and you're anything like us, you'll know that one of the shining stars of the series was the stunning 1960s décor. So you can imagine our excitement when we spotted one of our very own designs taking centre stage!

Deco Diamond Green is a beautiful deco wallpaper and is one of our favourites from our Hemingway Design Collection. Its subtle green colour paired with the deceptively intricate diamond pattern make this the perfect choice for those who want an authentic vintage feel in their home. We also assume this design helps to improve chess skills, so see you at the US Open Championships!



Image: Netflix





@milo\_the\_ginger\_cat

# LOVING YOUR HOMES

Tag us, submit a review and become  
part of the Loving Home family

#grahamandbrown #lovinghome



@dustanddaydreaming



Colour Spotlight  
**GLASS  
HEART**

@felintreathcottage



@layered.home



@nudeandthenovice



@eli\_at\_home



@chacefield\_rosebury



@littlebigbell



WE ARE LOVING YOUR STYLING OF OUR  
**BESPOKE MURALS**



@truffleinteriors



'THE QUALITY OF THE PAPER  
IS FANTASTIC AND THE  
COLOURS ARE BEAUTIFUL.  
THIS HAS TRANSFORMED  
OUR DINING AREA.'

GB Customer, Bath



# Say hello to CLAY & ROCK

Located in the rural Cheshire, Clay & Rock's passion is to source materials from around the world. Having over 35 years' experience, their philosophy is to provide a high level of service from initial enquiry through to completion. The owner, Mark, initially started a site in Kendal Cumbria in 1989 (Ceramic Collections) and then another site in Garstang Lancashire (Rockform). Each site was sold and the current business in Chester was set up in 2010, which at the time was a daunting task due to the recession.

Clay & Rock are specialists and importers of wall and floor tiles mainly from Italy. Alongside this, they have been selling Wood flooring for quite a number of years. Apart from Graham & Brown wallpapers and paints, they have recently introduced some interior items as well as Kadi Firebowls.



TATTENHALL, CHESTER  
CHESHIRE, CH3 9AH





*Our Guv'nor Unit* IN STORE

*‘We have seen a dramatic increase in clients showing an interest in **PAINT** and **WALLPAPER**.’*

Mark tells us ‘We have three great staff, plus me, and all of us are thankfully kept busy. We pride ourselves on great service and knowledge, with unrivalled choice from a great showroom, which has benefited from the introduction of Graham & Brown Products.’

There is something for everyone and prices that cater for all budgets. Many of Clay & Rocks sales come from further afield and quite regularly are sending out orders to London. They have even sent shipments to Antigua!

We pride ourselves with putting the customer at the heart of the business, so Clay & Rock’s values fit perfectly with ours. Luckily, it was at a time when when Mark and the team wanted to change their existing supplier, this added with the fact that they could now sell wallpapers made the decision to invest with Graham & Brown an easy one.

‘The whole package has been of great benefit to the showroom, the display unit is a real eye catcher! And at the same time is very easy to navigate both for customers and staff.’ He continues ‘We have seen a dramatic increase in clients showing an interest in paint and wallpaper along with some good sales of both wallpaper and paint. We are certainly glad that we made the switch from our previous supplier with the added bonus of wallpaper sales as well as paint.’

We couldn’t be more pleased that our new partner is already going so well. If you find yourself in the beautiful Cheshire area, make sure you pay them a visit!



